

Welcome to the AccessibilityOnline Webinar Series



A collaborative program between the
ADA National Network and the
US Access Board



**The Session is Scheduled to begin at 2:30pm Eastern Time
We will be testing sound quality periodically**

Audio and Visual are provided through the on-line webinar system. This session is closed captioned. Individuals may also listen via telephone by dialing 712-432-3100 code 930098 # (This is not a Toll Free number)

The content and materials of this training are property of the US Access Board and the Great Lakes ADA Center and cannot be used and/or distributed without permission. This program is funded through a contract agreement with the U.S. Access Board. For permission to use training content or obtain copies of materials used as part of this program please contact us by email at adata@adagreatlakes.org or toll free (877)232-1990 (V/TTY)

www.AccessibilityOnline.org

1



Webinar Features



- **Closed captioning** – click **CC** icon (top of screen) or control-F8 and adjust the captioning screen as needed
- **Customize your view** – choose “View” from the menu bar at the top of the screen and choose the layout you prefer from the dropdown menu.
- **Questions** - type and submit questions in the Chat Area Text box or press control-M and enter text in the Chat Area
- **Emotions/Hand-raising:** Please do not use these features during this session

2

Presenter

U.S. Access Board



Dave Yanchulis

3

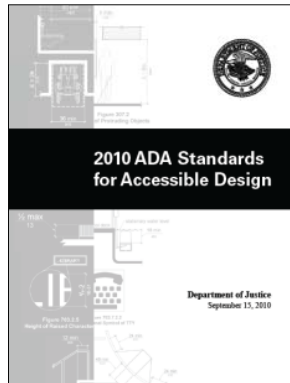
Detention and Correctional Facilities

Session Agenda

- **unique provisions & exceptions**
- **common use areas**
- **accessible cells**
- **visiting areas**

4

New ADA Standards



DOJ's 2010 standards
(mandatory March 15, 2012)

5

ADA and ABA Standards

ADA Standards (2010):
State & Local Government
Facilities



ABA Standards (2006):
Federal Facilities



6

Detention & Correctional Facilities

Facilities where people are *detained for penal or correction purposes*, or in which the *liberty of the inmates is restricted for security reasons*



7

Unique Provisions/ Exceptions

- Entrances & Doors
- General Exceptions
- Vertical Access
- Means of Egress/ ARAs
- Drinking Fountains
- Signs
- Telephones
- Holding & Housing Cells

8

Accessible Entrances (§206.4)

Detainee/ Inmate Entrances: at least 1

Restricted Entrances: at least 1 (if provided)

Public Entrances: 60% min.



9

Entrances & Doors (§404.1)

**Exceptions for manual doors operated
only by security personnel:**

- Hardware
- Closing speed
- Opening force

**Automatic doors: only clear width &
threshold requirements apply)**



10

Entrances (§206.8)

Bollards and other security barriers cannot obstruct accessible routes



11

Entrances

Accessible route required through or around security screen devices



12

Communication Systems (§230)



**2-Way Communication
Devices:**

**Visual and audible
signals required**

13

General Exceptions (§203.3)

**Exempt: Areas raised primarily for purposes of
security (e.g., guard tower) or life/fire safety**



14

General Exceptions

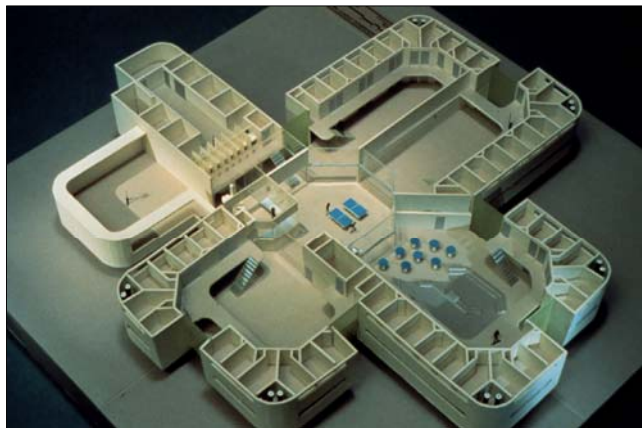
Exception also applies to raised interior spaces used by personnel to monitor detainees and inmates



15

Other Exceptions

Apply only to inmate or detainee use areas, not to public use areas

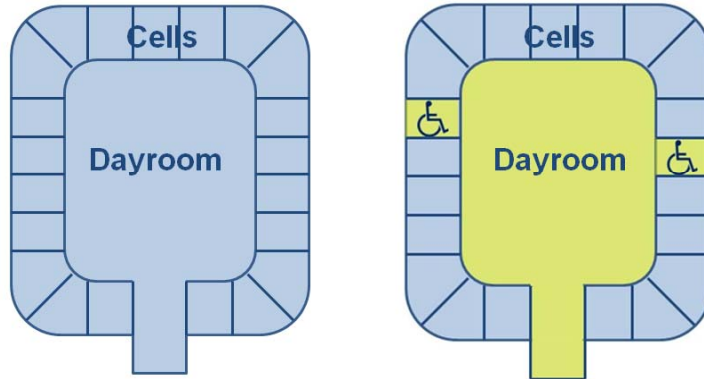


16

Common Use Areas (§203.7)

Exempt:

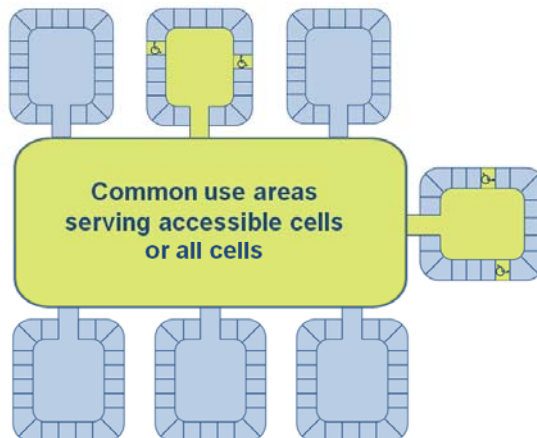
Common use areas used by inmates/detainees that do not serve accessible cells



17

Common Use Areas

Exception does not apply to any common use areas serving accessible cells



18

Common Use Areas

Elements provided must comply (e.g., dining/work surfaces, drinking fountains, phones, etc.)



19

Drinking Fountains (§211.1)

Dual access (from standing and seated positions) required at drinking fountains provided in secured areas

Exempt:
Units serving only inaccessible cells



20

Telephone: TTYs (§217.4)

At least 1 TTY required if payphone provided in secured area for detainees/inmates



Requirements for volume control and wheelchair access also apply to provided phones

21

Vertical Access (§206.2.3)

Access between stories is required when part of an accessible route to:

- accessible cells
- all common use areas serving accessible cells
- all public use areas

22

Vertical Access (§206.2.3)

Vertical access not required to levels without accessible cells or public/common use spaces required to be accessible



23

Stairways (§210.1)

Exempt: Stairs in non-public areas

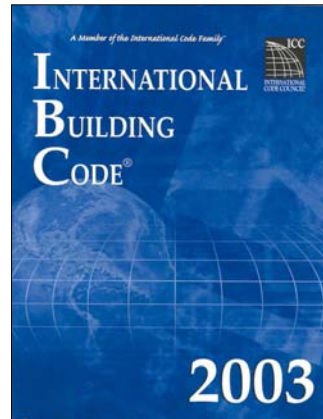


24

Means of Egress (§207.1)

Standards reference to the International Building Code

**Exception:
Areas of refuge not required in detention/correctional facilities**



25

Signs (§216.1)

**Exempt:
Signs not located in public use areas**

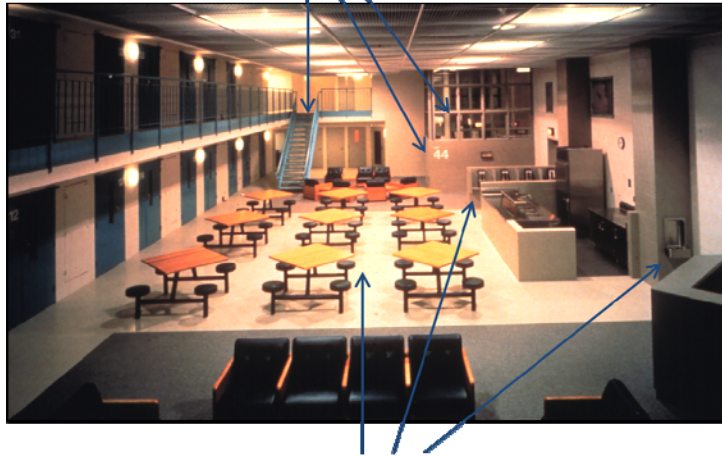


Signs in public use areas must fully comply

26

Common Use Areas

Exempt: stairs, raised security areas, signs



Covered elements include fixed tables, phones, drinking fountains

27

Holding & Housing Cells

28

Holding & Housing Cells (§232)

DOJ standards: enhanced scoping and dispersion requirements §35.151(k)



29

Holding & Housing Cells

Mobility Access (ADA Standards)

- at least 3% (no fewer than 1)
- Distribution in each classification level

Federal Facilities:

- 3% min. (Bureau of Prison design guidelines)



30

Holding & Housing Cells Alterations (ADA Standards)

Access to substitute cells permitted if:

- **Integrated with other cells**
- **Equivalent access to programs & services**
- **Located on same site**
(allowed on other site in system only if compliance is technically infeasible)

31

Special Use Cells

Access to at least 1 cell serving each purpose

Examples:

- **disciplinary detention/ segregation**
- **protective custody**
- **orientation, detoxification**
- **medical isolation**

32

Housing & Holding Cells

Communication Access

2% min. scoping for cells:

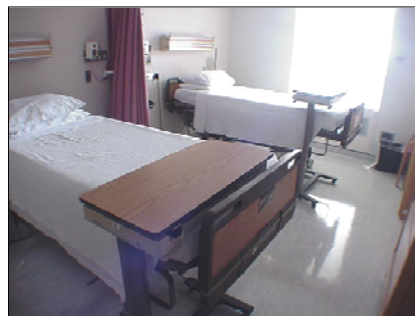
- equipped with audible emergency alarm systems
- permanently installed telephones



33

Medical Care Facilities (§223)

Scoping for patient bedrooms in medical and long-term care facilities applies (whether or not facility is licensed)



34

Holding & Housing Cells (§807)

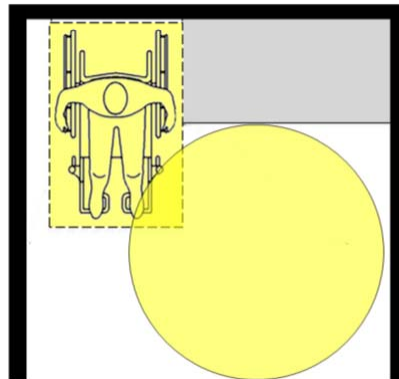
- Turning space
- Benches (where provided)
- Beds (where provided)
- Toilet & bathing Facilities



35

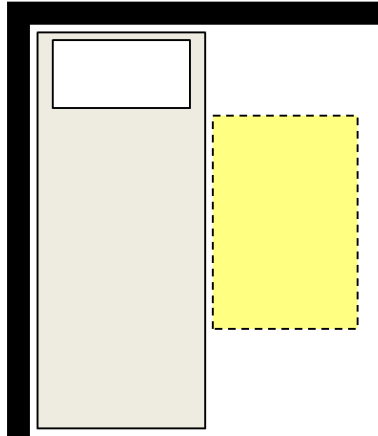
Holding & Housing Cells

- Access to at least 1 bench
- Turning Space (60" circle or T-shape)
- Doors (exceptions if operated only by security personnel)



36

Housing Cells: Beds



- Access to at least 1 (5% in cells with > 25 beds)
- Clear floor space for parallel approach
- Bed height: 17"-19" recommended

37

Other Elements

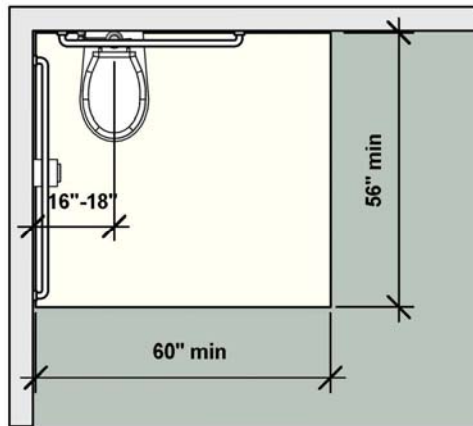
Other fixed elements provided in cells must comply (e.g., work/writing surfaces, storage, etc.)



38

Toilet Facilities

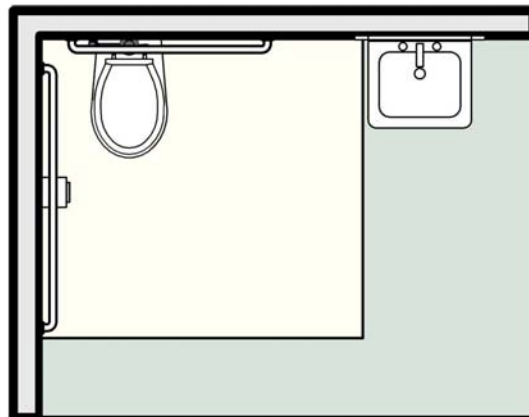
Full compliance for water closets serving accessible cells (location, clearance, grab bars, etc.)



39

Toilet Facilities

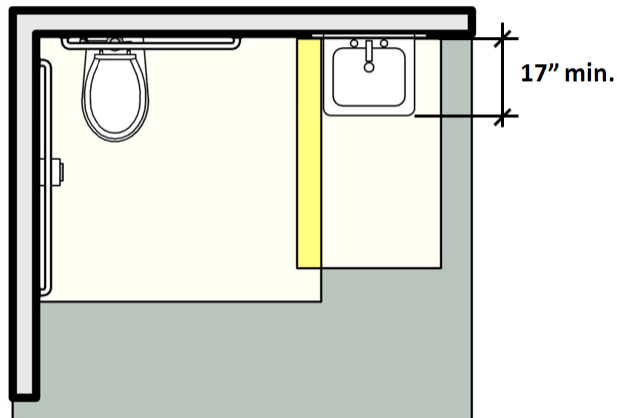
Lavatory cannot overlap water closet clearance



40

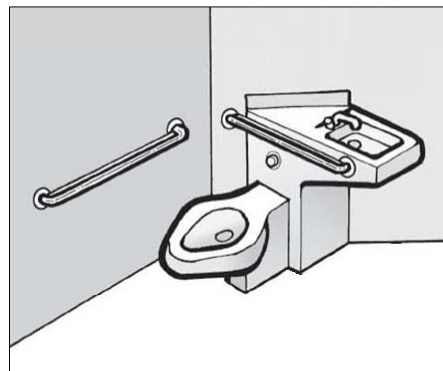
Toilet Facilities

Water closet & lavatory clearances can overlap;
knee/ toe space at lavatory 17" deep min.



Toilet Facilities

Combination units that
comply can be used;
otherwise separate
fixtures required



Toilet Facilities

**Combination units:
compliant grab
bars and water
closet clearance**



43

Toilet Facilities

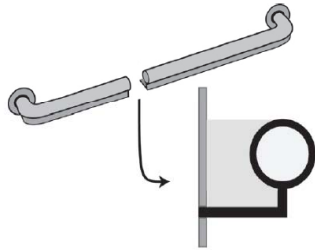
**Combination units:
compliant lavatory,
including clearance and
knee/toe space**



44

Toilet Facilities

Grab bars: not required in cells *specially designed without protrusions* for suicide prevention (required in all other accessible cells)



Infill plates can be used but cannot obstruct gripping surface

45

Bathing Facilities

Bathing facilities serving accessible cells must have at least 1 accessible shower (transfer stall or roll-in) or tub



46

Bathing Facilities: Showers

Fixed shower (48" max. high) can be used instead of hand-held shower spray unit



47

Visiting Areas

- **Access on both visitor and inmate side (at least 1 counter or 5% of cubicles) in each area**
- **Method to facilitate voice communication where security glazing provided**
- **Volume control if handset provided**



48

Visiting Areas

Swing-away seats can be located at accessible counters (must fully clear wheelchair space)



49

Other Requirements

Additional requirements of the ADA and the Rehabilitation Act:

- **Program Access**
- **Reasonable Modifications**
- **Effective Communication**

See DOJ's ADA Regulations (§35.152)

50

Questions?

**You may type and submit questions in the
Chat Area Text Box or press Control-M
and enter text in the Chat Area**

51

U.S. Access Board

(800) 872-2253 (voice)

(800) 993-2822 (TTY)

E-mail: ta@access-board.gov

www.access-board.gov

52

**Thank you for participating
in today's webinar**



Next session:
Accessible Webinars
September 6th
www.accessibilityonline.org
(877) 232-1990 (v/TTY)

53